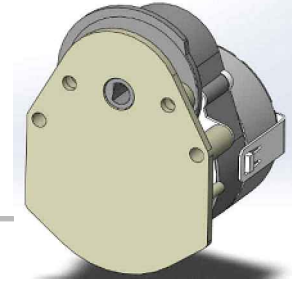


AC Cam Timer Series

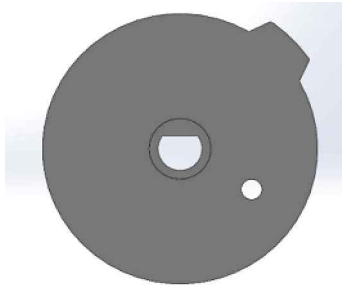


Design

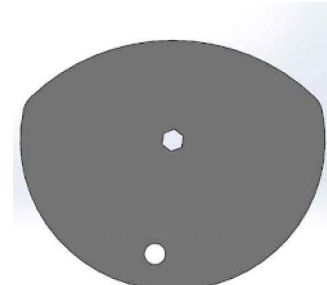
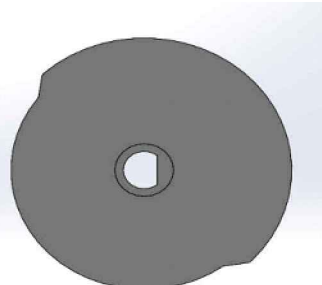
A cam timer is an electromechanical system for controlling a sequence of events automatically. Compact electric motor driven interval timer with pre-cut cams operating a microswitch. For the customer that needs a simple timing /control device we offer this widest range of Cam Timers. We have a choice of either synchronous or stepper motors, both drives have extensive gearbox ratio options. This rugged system gives huge flexibility to the OEM designer. Cam timers are employed on industrial machines, white goods etc. to control repetitive sequencing operations. Electric motor driven sequential timer. Low cost, easy mounting, compact plastic frame with 4mm hexagon cam shaft with resetting / fixed option cams operating replaceable microswitches. An electric motor drives, through a reduction gearbox, a shaft on which cam is mounted. Associated with each cam is one microswitch. The motor rotates at a fixed speed, and the camshaft follows, usually extremely slowly. Indentations or protrusions on the cam operate the switch at different times. By arrangement of the cam and switch, complex sequences of opening and closing switches can be made. The switches then operate different elements of the controlled system - for example motors, valves, etc. Most cam timers use a miniature mains synchronous motor to rotate the mechanism at an accurate constant speed.

Types of Cam

Stop Cam



Precut



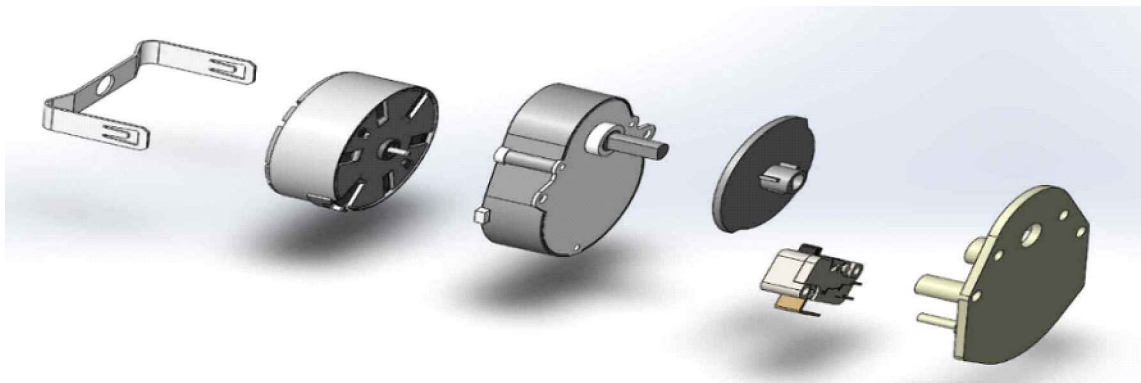
Other type of switching cams on special request only

AC Cam Timer Series

Technical Data

Supply Voltage	VAC	12, 24, 48, 110, 200, 230, 240 (others on request)
Supply tolerance	%	±10
Power consumption	VA	1.5/3.5
Revolution times		from 1 sec to 168 hr/rev
Outputs		1 microswitch(changeover contacts in silver alloy)
Contacts rating		16(4)A,250v as per EN61058 rating
Available cams		quick stop cam: (1 space or pulse per revolution) others on request: custom precut or moulded (max 24 pulses per revolution)
Minium operation (electrical)		quick stop cam:9.5°(1/38 of the revolution time) other cams: 9°(1/40 of the revolution time)(available on special request)
Output shaft		(4mm hexagon or Ø6mm with flat) others on request
Direction of rotation		Clockwise/Counterclockwise,reversible on request,(2 way clutch request)
torque	Nm	0.5
Contact tripping torque	Ncm	3
High voltage test		(As per standard IEC 60034-1)
Temperature rang	°c	Operating: -10°c to +55°c ; Storage: -30°c to +85°c
Mounting		Any position
Connections		Flexible leads 22AWG, 200mm length; stripped 10mm for motor & 6.35×0.8 for terminal.(others on request)
Protections	IP	10 (As per 60529)
Approvals		CE, UL (file no.E315124)
Electrical life at rated load at 85°c	cycle	50,000 according to EN

Exploded View



AC Cam Timer Series

Drawing

