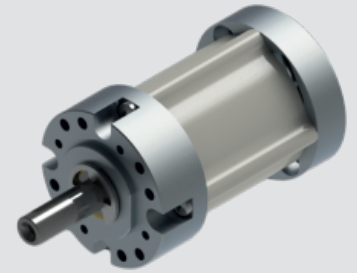


# Gear Series GB42K



Planetary Reduction Gearhead - 0.8..... 4 Nm

## Design

Gearhead GB42K, a moderately priced gearhead, is specially designed to cater heavy duty application in a cylindrical frame with centre shaft. This is a planetary gear box with all plastic gears. The output bearing is robust and is made of powdered metal (ball bearing on special request). The entire gearhead is permanently lubricated and therefore requires no maintenance. Brushed and Brushless DC Motors upto 52mm diameter are generally mounted on this gearhead to provide a compact and yet powerful drive.

## Technical data

Gear type	Nm	Spur Gears
Gear Torque		0.8 to 4.0Nm
Combination with Mechtex motors (add assembly drawing along with proper mounting)		BI28,BI36,BI42,DC28,DC30,DC32,DC36,DC38,BO32,BO42,DC42 DC52
Mounting	N	4 ~ M4X0.7X12mm deep, PCDØ36
Axial thrust	N	30
Lateral force		45
Output Bearings	Ø	Sintered
Output shafts	°C	8
Ambient temperature operation	IP	-15....+55
Enclosure		40

## Gearhead Data

Reduction		3.71	5.18	13.73	19.2	26.85	50.89	71.16	99.51	139.14	188.61	263.73	369.76	515.63	720.99	938.85*
Max. output shaft diameter	mm	8	8	8	8	8	8	8	8	8	8	8	8	8	8	8
Number of stages		1	1	2	2	2	3	3	3	3	4	4	4	4	4	4

Note - DC38 Motor not possible with ratio marked with \* suffix

## Dimensional Drawing

Front view:  $\phi 3.2 \times 2$  holes on PCD $\phi 25$ ,  $\phi 13$ ,  $\phi 5.2 \times 2$  holes on PCD $\phi 32$ ,  $\phi 4.2 \times 2$  holes on PCD $\phi 29$ , R2.6, 4.5, 60°, 30°.

Side view: "L", 21.7, 3, 2,  $\phi 6$ , 2.3, ctrg DIN 332-D M3, Key DIN 6885-A3x3x16.

Shaft view: (M4x0.7x12mm deep x 4nos PCD $\phi 35$ )\*, (M3x0.5x12mm deep x 4nos PCD $\phi 32$ )\*,  $\phi 42$ , M4x0.7x12mm deep x 4nos PCD $\phi 36$ .

Note - Onspecial request \*suffix

GB42K	
Sr.no	GEARBOX LENGTH "L"
1	41
2	48
3	55
4	62