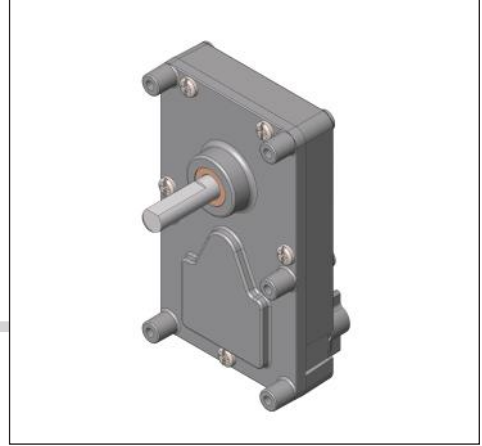


# Gear Series **GBM**

## Spur Reduction Gearhead - 15 Nm



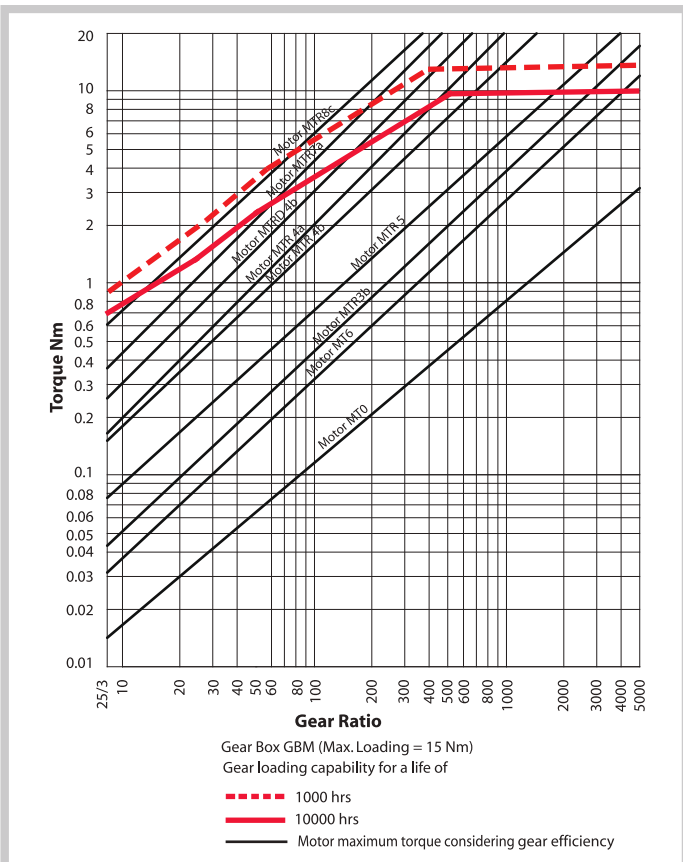
### Design

Gearhead GBM contains heavily loaded steel gear wheels. The spur/helical gears rotate on fixed steel spindles which are hardened and polished to a mirror finish. The thick output shaft rotates in robust sintered bushings. Ball bearing is also possible on request. All the gears are housed between a robust casting. All bearings are permanently lubricated and therefore require no maintenance. The first pair is helical & the first gear is made of synthetic resin bonded fabric for low noise. Despite being a very high torque gearhead, the cost is not very high. This gear box is suitable for shaded pole motor(FHP), BLDC & DC as well as mechtex range of synchronous/ stepper motor.

### Technical Data

Gear Type		Spur/ Helical
Gear Torque	Nm	15
Combination with Mechtex motors		FHP motors, BLDC & brushed DC & Synchronous/ Stepper motors
Mounting		any position
Weight	g	820
Axial thrust	N	400
Lateral force	N	600
Radial torque	Nm	6
Slipping clutches/free wheel		available for certain ratios
Output bearing		Sintered Bronze, Ball Bearing on request
Output shafts	Ø	dia. 9.5 x 29 mm (with a flat), others on request
Ambient temperature operation	°C	-15...+ 55
Enclosure	IP	40

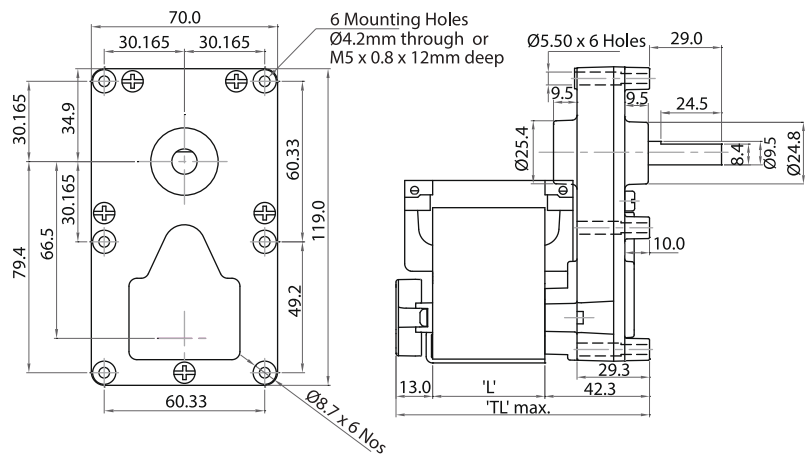
### Torque/Transmission Ratio/Life Graph



### Transmission Ratios

306, 459, 468, 546, 827, 1442, 1869, 2276, 2551

### Dimensional Drawing GBM



With Shaded Pole Motor	
L	TL max.
10	66.50
15	71.50
25	81.50
30	86.50
40	96.50

