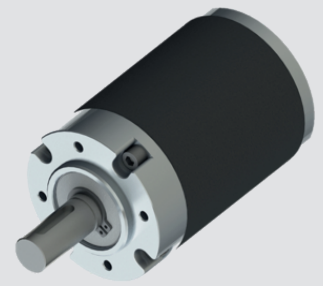


# GB82K



Planetary Reduction Gearhead- 13 to 105 Nm

## Design

Gearhead GB82K is specially designed to cater heavy duty application in a cylindrical frame with centre shaft. This is a planetary gear box with all plastic gears. Ball bearings are used for higher torque requirement along with its increased life. The entire gearhead is permanently lubricated and therefore requires no maintenance. Brushed and Brushless DC Motors upto 92mm diameter are generally mounted on this gearhead to provide a compact and yet powerful drive.

## Technical Data

Gear type		Spur Gears
Gear Torque	Nm	13 to 105Nm
Mounting		4 ~ M6X12mm deep, PCDØ65
Axial thrust	N	200
Lateral force	N	1000
Output Bearings		Ball bearing
Output shafts	Ø	19
Ambient temperature operation	°C	-15....+55
Enclosure	IP	40

## Gearhead Data:

Reduction		3.71	5.18	13.73	19.2	26.85	35*	50.89	71.16	99.51	139.1	188.6	263.7	369.8	515.6	721	938.85*
Number of stages		1	1	2	2	2	2	3	3	3	3	4	4	4	4	4	4
Torque	Nm	20	20	60	60	60	60	80	80	80	80	120	120	120	120	120	120
Gear Box Length	mm	60.4	60.4	81.4	81.4	81.4	81.4	102.4	102.4	102.4	102.4	123.4	123.4	123.4	123.4	123	123.4

Note: \* Raito on special request

## Dimensional Drawing

