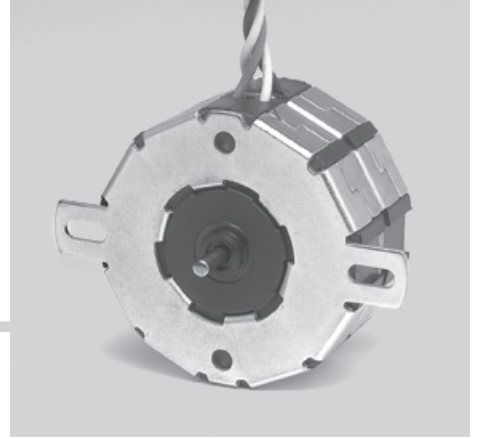


# Motor Series **MTS4b**

## Stepper Motor 15°



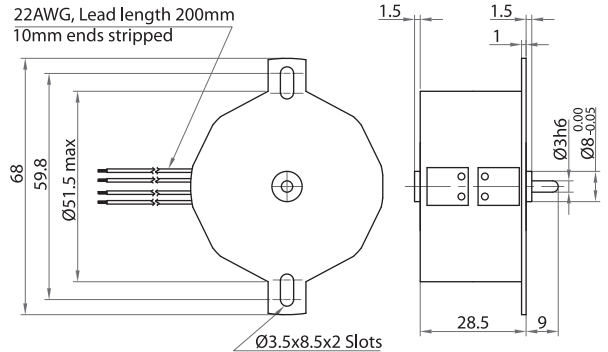
### Standard Data

|                      |    |  |
|----------------------|----|--|
| Motor type           |    | Permanent Magnet (PM) stepper motor                      |
| Electrical Enclosure | IP | 40   |
| Connections          |    | Flexible Leads 22 AWG, 200mm length; ends stripped 10 mm |
| Life expectancy      |    | 3 years in continuous operation                          |
| Weight               | g  | 200  |
| Mounting             |    | Any position by ears or screw clip                       |

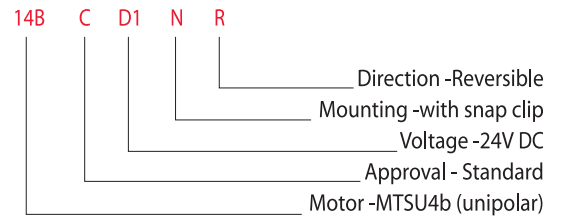
### Technical Data

|                        |                    |     |          |            |
|------------------------|--------------------|-----|----------|------------|
| Steps per revolution   |                    |     |          | 24         |
| Degree/step            |                    |     |          | 15         |
| Winding Type           |                    |     |          | bipolar    |
| Standard Voltage       | V                  | 6   | 12       | 24         |
| Resistance per winding | $\Omega$           | 9.5 | 61       | 251        |
| Winding Type           |                    |     |          | unipolar   |
| Standard Voltage       | V                  | 6   | 12       | 24         |
| Resistance per winding | $\Omega$           | 15  | 61       | 251        |
| Winding temperature    | $^{\circ}\text{C}$ |     |          | 105 max.   |
| Holding torque         | Ncm                | 5.2 | (MTSB4b) | 4 (MTSU4b) |
| Axial Force            | N                  |     |          | 3          |
| Lateral Force          | N                  |     |          | 6          |
| Rotor inertia          | gcm <sup>2</sup>   |     |          | 13         |

### Dimensional Drawing

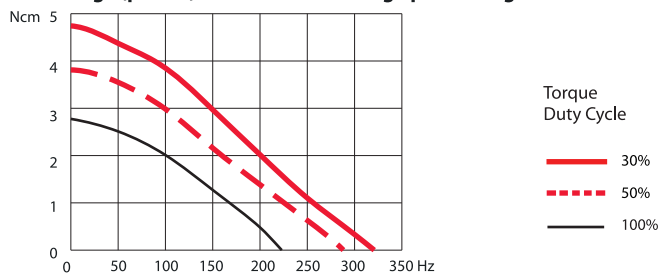


### Ordering Data (eg.)

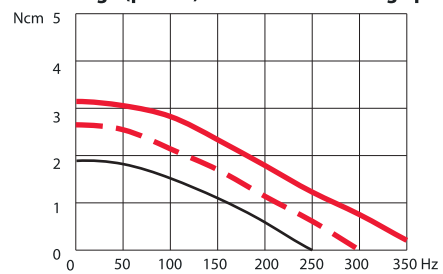


### Torque Graphs

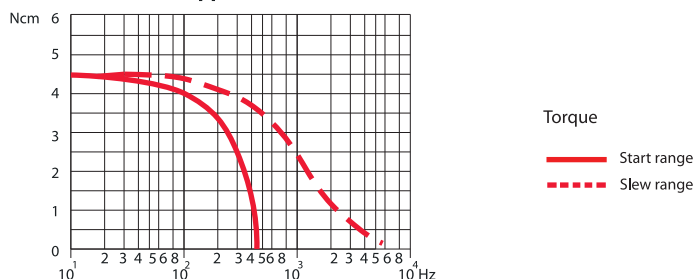
Start range (pull-in) with constant voltage power stage



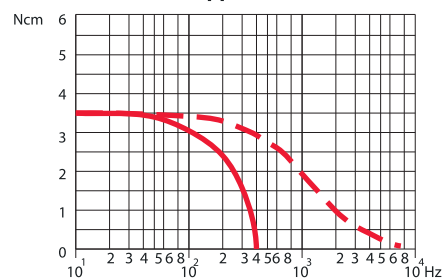
Start range (pull-in) with constant voltage power stage



2-Phase stepper Motor MTSB4b



4-Phase Stepper Motor MTSU4b



Slew range (pull-out) and start range (pull-in) with constant current power stage (chopper Drive)

Slew range (pull-out) and start range (pull-in) with constant current power stage (chopper Drive)