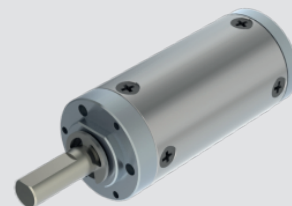


# Gear Series GB22P



Planetary Reduction Gearhead - 0.2..... 1 Nm

## Design

Gearhead GB22P, a moderately priced gearhead, is specially designed to cater heavy duty application in a cylindrical frame with centre shaft. This is a planetary gear box with the possibility of polyacetal gears in first stage (for low noise) and remaining stages being powder metal or hardened metal (on special request). The output bearing is robust and is made of powdered metal (ball bearing on special request). The entire gearhead is permanently lubricated and therefore requires no maintenance. Brushed and Brushless DC Motors upto 28mm diameter are generally mounted on this gearhead to provide a compact and yet powerful drive.

## Technical data

Gear type		Spur Gears
Gear Torque	Nm	0.2 To 1Nm
Combination with Mechtex motors (add assembly drawing along with proper mounting)		DC24,DC28,BI24, BI28,DC22
Mounting		4 ~ M1.6X0.35X4mm deep PCD19
Axial thrust	N	30
Lateral force	N	45
Output Bearings		Sintered
Output shafts	Ø	6
Ambient temperature operation	°C	-15....+55
Enclosure	IP	40

## Gearhead Data

Reduction		3.71	5.18	13.73	19.2	26.85	50.89	71.16	99.51	139.14	188.61	263.73	369.76	515.63	720.99	938.85*
Max. output shaft diameter	mm	6	6	6	6	6	6	6	6	6	6	6	6	6	6	6
Number of stages		1	1	2	2	2	3	3	3	3	4	4	4	4	4	4

Note - DC38 Motor not possible with ratio marked with \* suffix

## Dimensional Drawing

