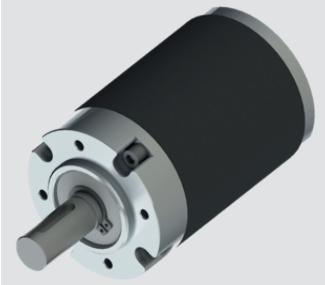


GB82P



Planetary Reduction Gearhead- 20 to 120 Nm

Design

Gearhead GB82P is specially designed to cater heavy duty application in a cylindrical frame with centre shaft. This is a planetary gear box with all metal gears ,with plastic gears in first stage. Ball berings are used for higher torque requirement along with its increased life. The entire gearhead is permanently lubricated and therefore requires no maintenance. Brushed and Brushless DC Motors upto 92mm diameter are generally mounted on this gearhead to provide a compact and yet powerful drive.

Technical Data

| | | |
|---------------------------------|----|--------------------------|
| Gear type | | Spur Gears |
| Gear Torque | Nm | 20 to 120 Nm |
| Combination with Mechtex motors | | BO62, BO92, DC52 |
| Mounting | | 4 ~ M6X12mm deep, PCDØ65 |
| Axial thrust | N | 200 |
| Lateral force | N | 1000 |
| Output Bearings | | Ball bearing |
| Output shafts | Ø | 19 |
| Ambient temperature operation | °C | -15....+55 |
| Enclosure | IP | 40 |

Gearhead Data:

| | | | | | | | | | | | | | | | | | |
|------------------|----|------|------|-------|------|-------|------|-------|-------|-------|-------|-------|-------|-------|-------|-----|---------|
| Reduction | | 3.71 | 5.18 | 13.73 | 19.2 | 26.85 | 35* | 50.89 | 71.16 | 99.51 | 139.1 | 188.6 | 263.7 | 369.8 | 515.6 | 721 | 938.85* |
| Number of stages | | 1 | 1 | 2 | 2 | 2 | 2 | 3 | 3 | 3 | 3 | 4 | 4 | 4 | 4 | 4 | 4 |
| Torque | Nm | 20 | 20 | 60 | 60 | 60 | 60 | 80 | 80 | 80 | 80 | 120 | 120 | 120 | 120 | 120 | 120 |
| Gear Box Length | mm | 60.4 | 60.4 | 81.4 | 81.4 | 81.4 | 81.4 | 102.4 | 102.4 | 102.4 | 102.4 | 123.4 | 123.4 | 123.4 | 123.4 | 123 | 123.4 |

Note: * Raito on special request

Dimensional Drawing

