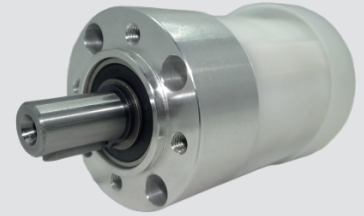


# Gear Series GB52K



Planetary Reduction Gearhead - 2.0..... 10 Nm

## Design

Gearhead GB52K, a moderately priced gearhead, is specially designed to cater heavy duty application in a cylindrical frame with centre shaft. This is a planetary gear box with all plastic gears . The output bearing is robust and is made of powdered metal (ball bearing on special request). The entire gearhead is permanently lubricated and therefore requires no maintenance. Brushed and Brushless DC Motors upto 52mm diameter are generally mounted on this gearhead to provide a compact and yet powerful drive.

## Technical data

Gear type		Spur Gears
Gear Torque	Nm	2.0 to 10.0Nm
Combination with Mechtex motors (add assembly drawing along with proper mounting)		DC36,DC38,BO32,BO42,DC42 DC52
Mounting		4 ~ M5X0.8X7mm deep, PCDØ40
Axial thrust	N	450
Lateral force	N	150
Output Bearings		Ball bearing
Output shafts	Ø	12
Ambient temperature operation	°C	-15.....+55
Enclosure	IP	40

## Gearhead Data

Reduction		3.71	5.18	13.73	19.2	26.85	50.89	71.16	99.51	139.14	188.61	263.73	369.76	515.63	720.99	938.85
Max. output shaft diameter	mm	12	12	12	12	12	12	12	12	12	12	12	12	12	12	12
Number of stages		1	1	2	2	2	3	3	3	3	4	4	4	4	4	4

## Dimensional Drawing

