

Gear Series **GBL**

Spur Reduction Gearhead - 0.5 Nm



Design

Gearhead series GBL (GBLa & GBLC) has 2 gearheads in a rectangular frame. They are designed to cater small loads in a small frame. GBLa has further option to mount potentiometer in addition to the motor with diameters 36 mm. Both gearheads have multi step thick metal gears at the output with possibility of using poly acetal gear in the first stages to damp the noise. The gears rotate on steel spindles that are polished to a mirror-finish & introduced between metal plates. There is a plastic frame in GBLa. All bearings are permanently lubricated & therefore require no maintenance. Motor is attached to gear box by means of screws.

Technical Data

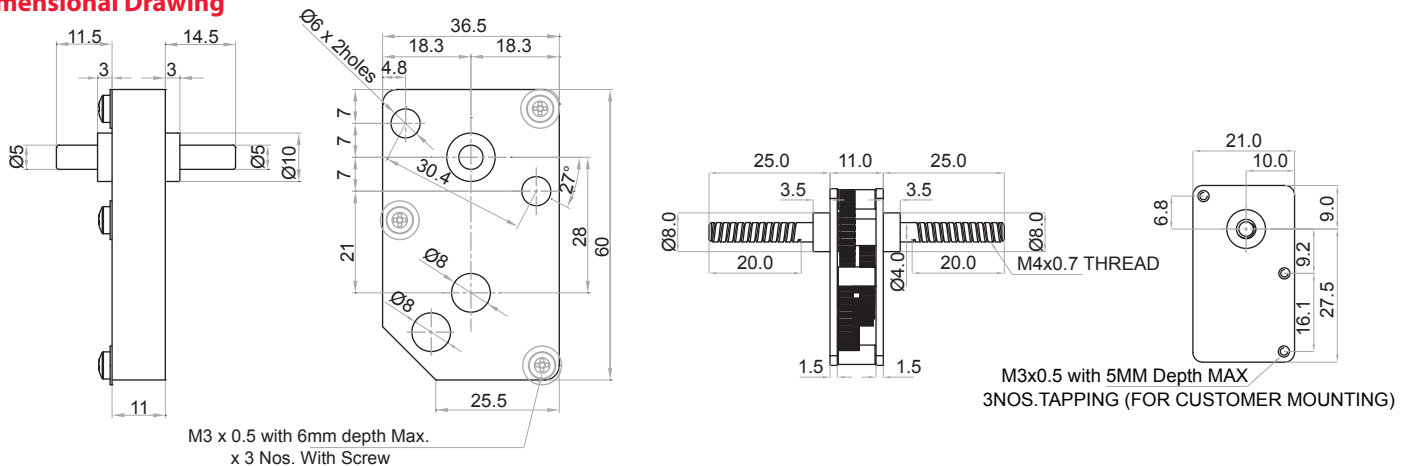
		GBLa	GBLc
Gear Type		Spur	Spur Reduction
Gear Torque	Nm	0.5	0.3
Combination with Mechtex motors		MTR2b / MTS2b / MTR3a / MTS3a / MTR3b / MTS3b / DC28 / D32 / DC30 & others on request	DC15qGBLc
Mounting		Any position	Any position
Weight	g	140	30
Axial thrust	N	20	20
Lateral force	N	50	25
Radial torque	Nm	0.6	0.3
Output bearing		Brass sleeve bushings	Sintered bronze
Output shafts	Ø	dia. 5 (Round) extended both sides; others on request	dia. 4mm (others on request)
Ambient temperature operation	°C	-15...+ 55	-15 ... +55
Enclosure	IP	30	20

Transmission Ratios

GBLa 77.88 , 150.15 (Others on special request)

GBLc 30 (Others on special request)

Dimensional Drawing



GBLa

GBLc

Photographs

