

Gear Series **GB380CP**

Spur Reduction Gearhead - 0.5 Nm



Design

Gearhead GB380CP is a multi step gearhead with all polyacetal gears which rotate on steel spindles, polished to a mirror-finish and introduced between metal plates with a plastic frame. All bearings are permanently lubricated and therefore require no maintenance. Thicker shafts ($\varnothing 6-7\text{mm}$) mounted in robust bushings ($\varnothing 12$) are available. Similarly the gears at the output end can be metal (GB380CPH) with thick shafts ($\varnothing 6-7\text{mm}$) & robust bushings. Sintered gears variant also possible (GB380CSI).

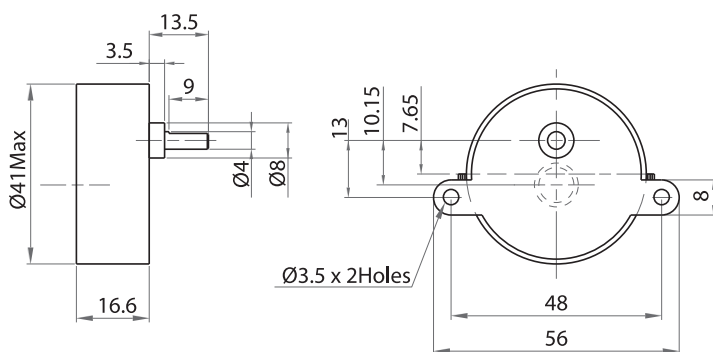
Standard Data

| | | |
|---------------------------------|--------------------|---|
| Gear Type | | Spur |
| Gear Torque | Nm | 0.5 |
| Combination with Mechtex motors | | Small DC Motors up to dia. 35mm (DC 28/30/32) & MTR3a/3b & MTS3a/3b |
| Mounting | | any position |
| Weight | g | 55 |
| Axial thrust | N | 20 |
| Lateral force | N | 60 |
| Radial torque | Nm | 0.6 |
| Output bearing | | Sintered bronze sleeve bushings, (Ball bearing on request) |
| Output shafts | \varnothing | Shafts same as GB5P gear series |
| Ambient temperature operation | $^{\circ}\text{C}$ | -15...+ 55 |
| Enclosure | IP | 30 |

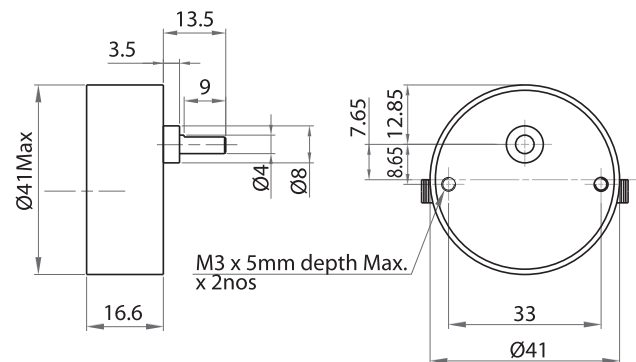
Transmission Ratios

For Transmission Ratios refer to page no. 6

Dimensional Drawing



With Mounting Plate



With Round Plate Threaded Nut

Photographs

